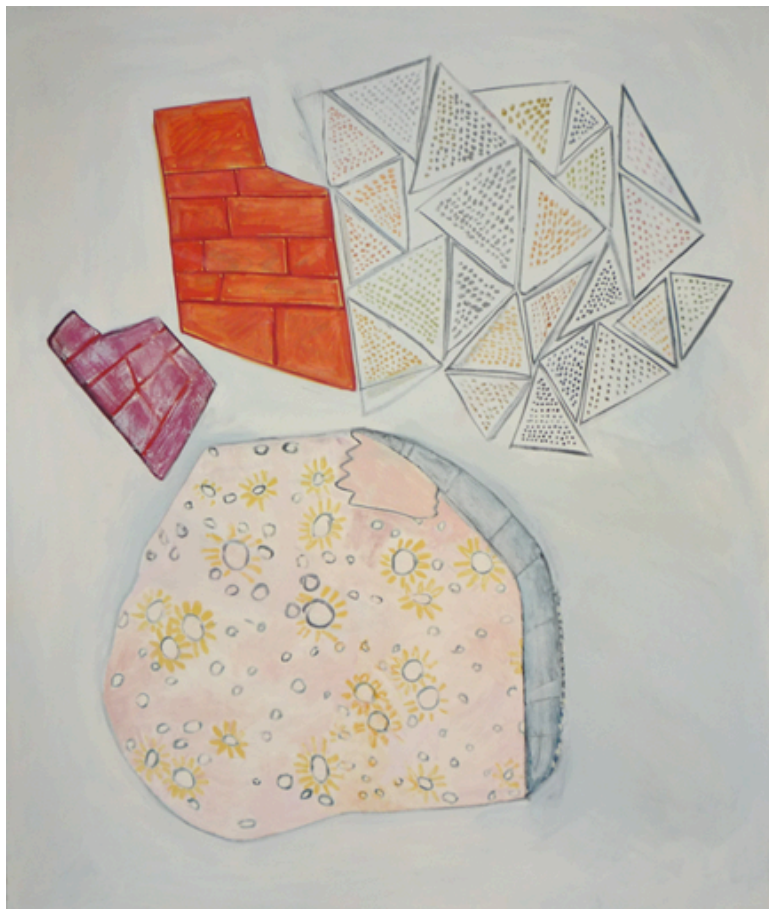


For Immediate Release



Anne McCaddon, *Four Play 3*, 2011

**Exhibition:** “Plain Brown Wrapper,” presented in conjunction with Human Resources

**Location:** Upstairs Gallery, Human Resources, 410 Cottage Home Street, Los Angeles, CA 90012

**Dates:** October 20th - November 2nd, 2011

**Opening Reception:** Saturday, October 22nd, 7-10 pm

**Artists:** Sophie Lee, Anne McCaddon, Allison Miller, Yunhee Min

A plain brown wrapper is used when something is too valuable - or too subversive - to reveal to the world. It’s a strategy of concealment, so that the treasured object isn’t immediately recognized for what it is. It’s also an enticement; since only things of value are given a plain brown wrapper, it creates an urgency to know what lies beneath the surface. “Plain Brown Wrapper” presents four LA-based artists - **Sophie Lee, Anne McCaddon, Allison Miller, Yunhee Min** - whose work shares a seemingly straightforward, humble presentation that leads to layered richness upon further looking. This exhibition is a joint venture between Human Resources and Statler Waldorf Gallery.

On view October 20th - November 2nd, 2011, Thursday - Saturday 12-6pm

Also on view: Molly Larkey: “The Lost Alphabet, Pants That Fit, and Other Implausible Disguises”, October 20th - November 12th, 2011

Sophie Lee has a BA from Mills College and an MFA from the University of California, Irvine. Her work is a response to the formal and psychological manifestations of spaces, whether the frame of the paper or the architecture of a room. Incorporating a variety of found and traditional artist materials, the work manifests as collage, painting, sculpture and installation.

Anne McCaddon received her BFA from the School of the Art Institute of Chicago in 2002 and her MFA in Painting from the University of California, Los Angeles in 2009. Solo exhibitions include Over-Under Worked, with Artist Curated Projects at Parker Jones and The Alphabet Paintings at The Los Angeles County Museum of Art ARSG Special Exhibitions. McCaddon has exhibited with Statler Waldorf Gallery, Los Angeles, CA; Arena 1 Gallery, Santa Monica, CA; Steve Turner Contemporary, Los Angeles, CA; Black Dragon Society, Los Angeles, CA; Glu & Harvey Levine Temporary, Los Angeles, CA; and V&A, New York, NY.

Allison Miller received her BFA in Printmaking from the Rhode Island School of Design and her MFA with a concentration in Painting and Drawing from the University of California, Los Angeles. She has had solo exhibitions with and is represented by ACME., Los Angeles and has a forth-coming solo exhibition at Susan Inglett, New York. Group exhibitions include: New Art for a New Century, Orange County Museum of Art, Newport Beach, Meet Me Inside, Gagosian Gallery, Los Angeles, Tables and Chairs, D'Amelio Terras, New York, Something About Mary, Orange County Museum of Art, LA Now, Las Vegas Museum of Art, softcore HARD EDGE, The Art Gallery of Calgary, and a four person exhibition at Redling Fine Art, Los Angeles. Her work has been reviewed in Flash Art, Artforum, Frieze, and the Los Angeles Times. In 2009, she was included in Painting Abstraction: New Elements In Abstract Painting, by Bob Nickas, published by Phaidon Press. She has lectured at various colleges and graduate programs and has taught at the University of California, Los Angeles, the University of California, San Diego, the University of California, Irvine, the University of California, Riverside, Anderson Ranch Arts Center and Claremont Graduate University.

Yunhee Min holds a BFA degree from Art Center College of Design and a MA degree from Harvard University. Solo exhibitions include LAX ART, Los Angeles, The Amie and Tony James Gallery at The City University of New York, The Pasadena Museum of Contemporary Art, The Museum of Contemporary Art, San Diego (Circa Series), ArtPace, San Antonio, TX; Yerba Buena Center for the Arts, San Francisco, CA; and the Luckman Gallery, California State University, Los Angeles, CA. Min has been included in exhibitions at Silvershed, New York, NY; Sweeney Art Gallery, Riverside, CA; the Weatherspoon Museum, Greensboro, NC; the CCAC Wattis Institute for Contemporary Arts, San Francisco, CA; the Seattle Art Museum, Seattle WA; Artists Space, New York, NY; in "Snap Shot", UCLA Hammer Museum, Los Angeles; in the Altoids Collection at The New Museum, New York, NY; the California Center for the Arts, Escondido, CA; and the San Francisco Art Institute, Walter/McBean Gallery, San Francisco, CA.

Statler Waldorf Gallery is an artist-run exhibition space located in a private residence in Echo Park. We are open by appointment only. For more information, please email: [info@statlerwaldorfgallery.com](mailto:info@statlerwaldorfgallery.com).

Human Resources is an art/performance space currently located at 410 Cottage Home Street in Chinatown, 90012. Human Resources is a team of creative individuals which seeks to broaden engagement with contemporary and conceptual art, with an emphasis on performative and underexposed modes of expression.

Human Resources is entirely volunteer run and seeks to foster widespread public appreciation of the performative arts by encouraging maximum community access. Human Resources also serves as a point of convergence for diverse and disparate art communities to engage in conversation and idea-sharing promoting the sustainability of non-traditional art forms.

Contact HR at:  
[info@humanresourcesla.com](mailto:info@humanresourcesla.com)  
[213-290-4752](tel:213-290-4752)

[humanresourcesla.com](http://humanresourcesla.com)

410 Cottage Home Street  
Los Angeles, CA 90012